



1. PERSPECTIVE - VIEW FROM PACIFIC HIGHWAY / CRAIGIE AVE INTERSECTION

2	ROLLERSHUTTER AND LG DRIVEWAY OMITTED	20/01/17	HMC
1	FIRST ISSUE	01/04/17	HMC
REV	REVISION DESCRIPTION	DATE	BY

Project
TUGGERAH LAKES
PRIVATE HOSPITAL

Principal
HEALTH CARE PTY LTD

HPI HEALTH PROJECTS INTERNATIONAL
Architects and Health Facility Planners
ACN 660 456 595
Suite 1, Ground Floor, 68 Alfred St Milsons Point, NSW 2061
Ph: (02) 9460 4199 Fax: (02) 9460 4299

CAD File: WHE-REN-1
Dwg No: WHE-REN-1
Issue: 2

USE FIGURED DIMENSIONS ONLY. DO NOT SCALE
ALL DIMENSIONS SHALL BE VERIFIED ON SITE AND
DISCREPANCIES IMMEDIATELY BROUGHT TO THE
ATTENTION OF THE PROJECT MANAGER
FOR RESOLUTION

"CLOUDS" & REVISIONS ARE INTENDED AS GUIDES
AND DO NOT NECESSARILY DESCRIBE THE FULL
EXTENT OF REVISIONS.
ASCERTAIN FULL EXTENT BY COMPARISON WITH
PREVIOUS VERSION

QA
CHECK

Subject	By	Date	Subject	By	Date	Subject	By	Date	True North
RDS			STRUCT			PROJ ARCH			
ARCH			SPEC CONS						PROJECT NORTH
AUT			SEV						

Drawn	Checked	Date	Scale/s
EH	HMC	01/04/17	N.T.S
Drawing Title RENDERING 1			



1. PERSPECTIVE - VIEW FROM EASTERN VANTAGE POINT ALONG CRAIGIE AVE

1	FIRST ISSUE	07/04/17	HMC
REV	REVISION DESCRIPTION	DATE	BY
Project			
TUGGERAH LAKES PRIVATE HOSPITAL			
Principal			
HEALTH CARE PTY LTD			
HPI HEALTH PROJECTS INTERNATIONAL Architects and Health Facility Planners ACN 084 054 595 Suite 1, Ground Floor, 68 Alfred St Hilsons Point, NSW 2061 Ph: (02) 9440 4399 Fax: (02) 9440 4299			
CAD File	Dwg No	Issue	
WHE-REN-2	WHE-REN-2	1	

USE FIGURED DIMENSIONS ONLY. DO NOT SCALE
ALL DIMENSIONS SHALL BE VERIFIED ON SITE AND
DISCREPANCIES IMMEDIATELY BROUGHT TO THE
ATTENTION OF THE PROJECT MANAGER
FOR RESOLUTION

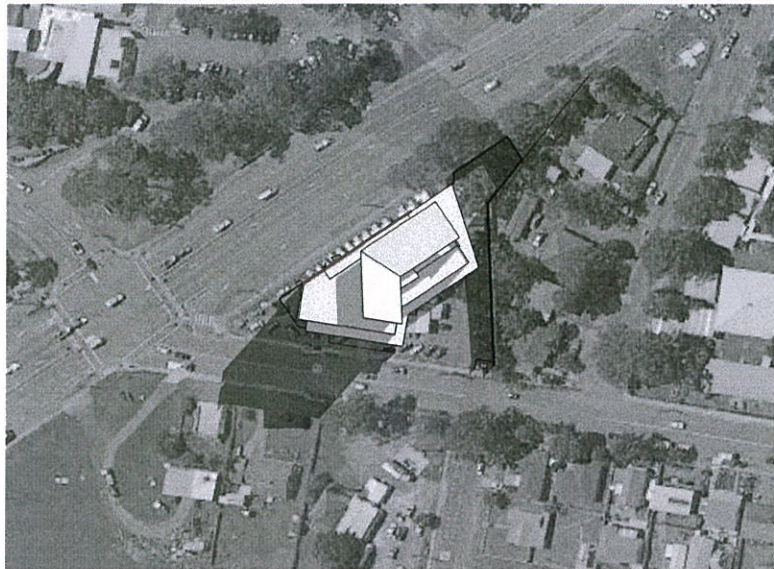
"CLOUDS" & REVISIONS ARE INTENDED AS GUIDES
AND DO NOT NECESSARILY DESCRIBE THE FULL
EXTENT OF REVISIONS.
ASCERTAIN FULL EXTENT BY COMPARISON WITH
PREVIOUS VERSION.

QA

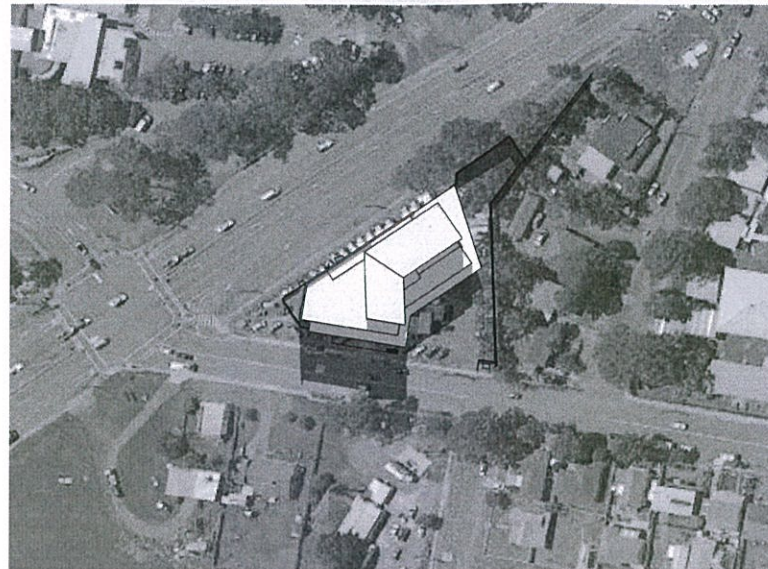
CHECK

Subject	By	Date	Subject	By	Date	Subject	By	Date	True North	Drawn	Checked	Date	Scale/s
RDS			STRUCT			PROJ. ARCH						01/04/17	A1:5
ARCH			SPEC CONS										
AUT			SERV										

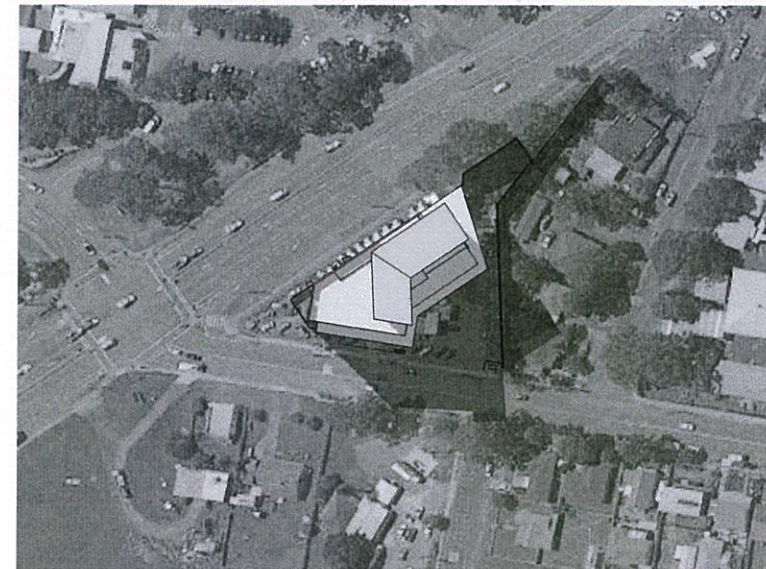
Drawing Title
PROJECT
NORTH
RENDERING 2



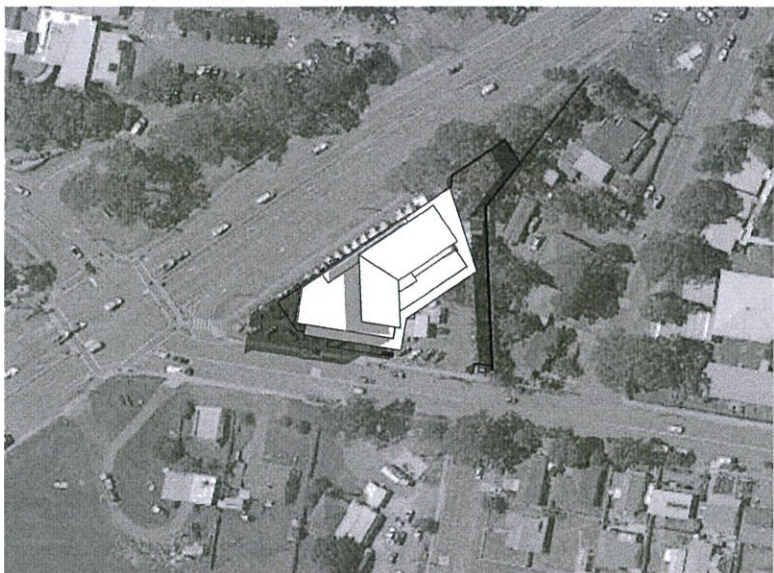
1. 21st June 9am



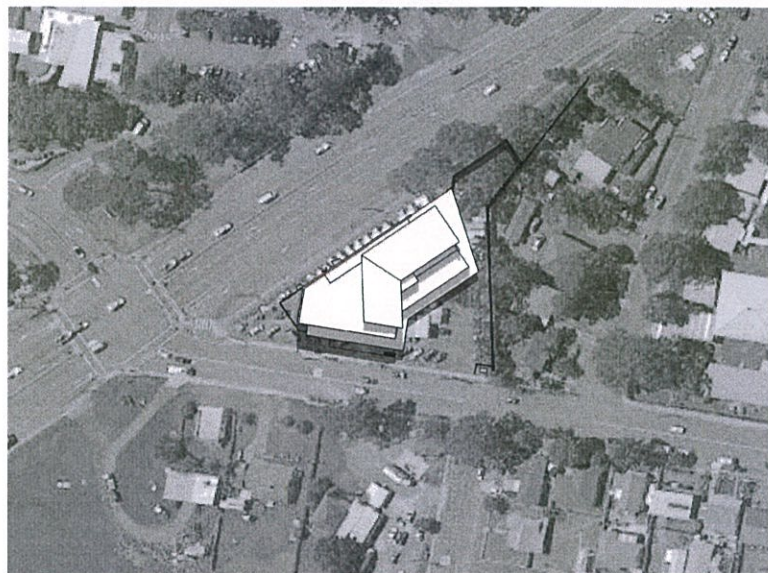
2. 21st June 12pm



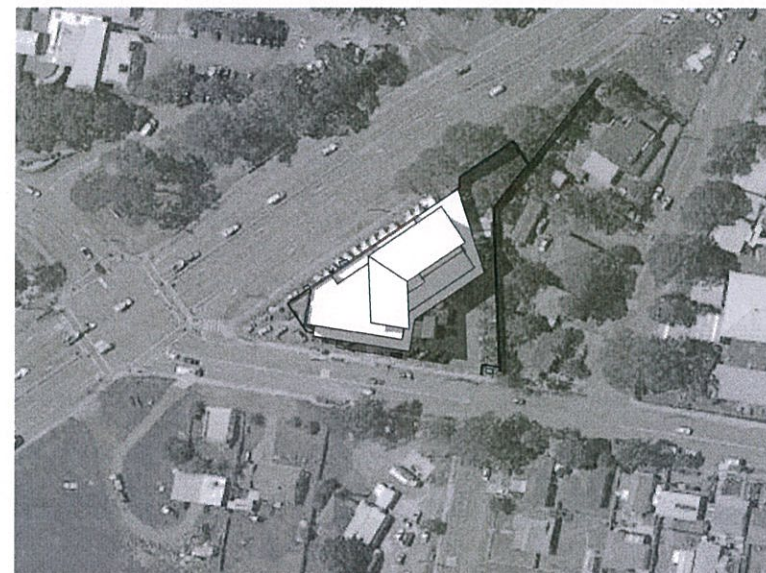
3. 21st June 3pm



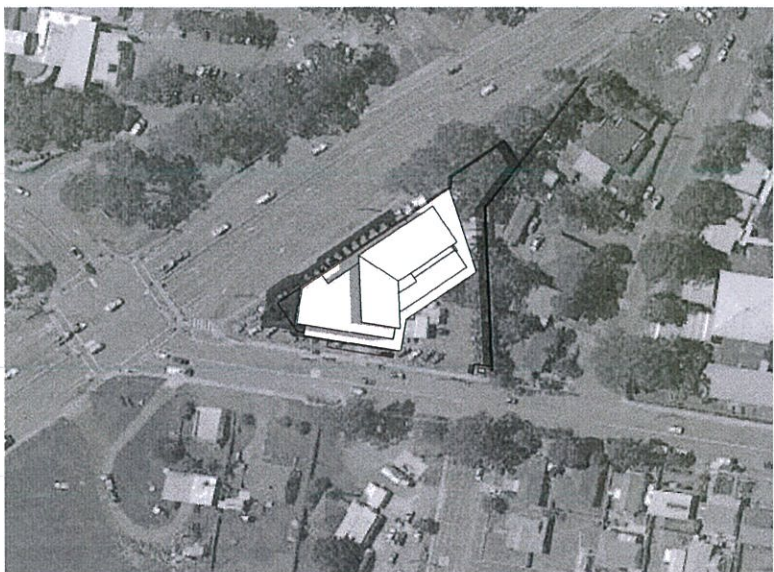
4. 20th March 9am



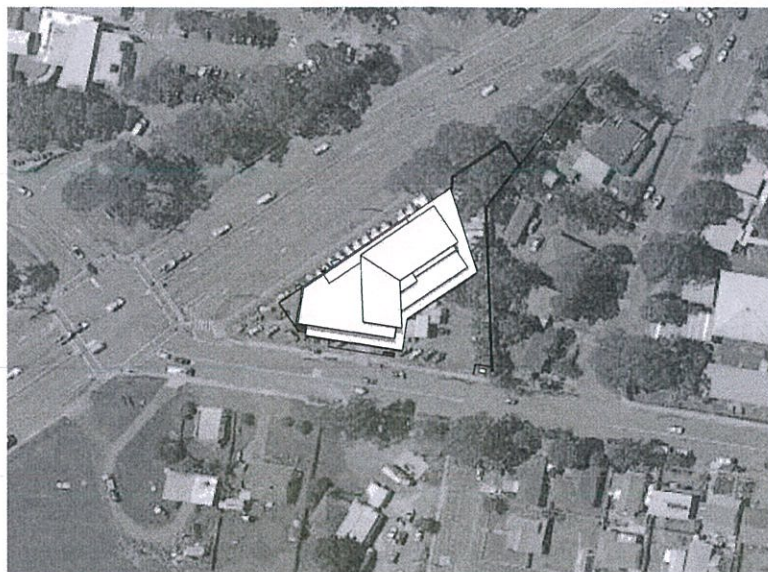
5. 20th March 12pm



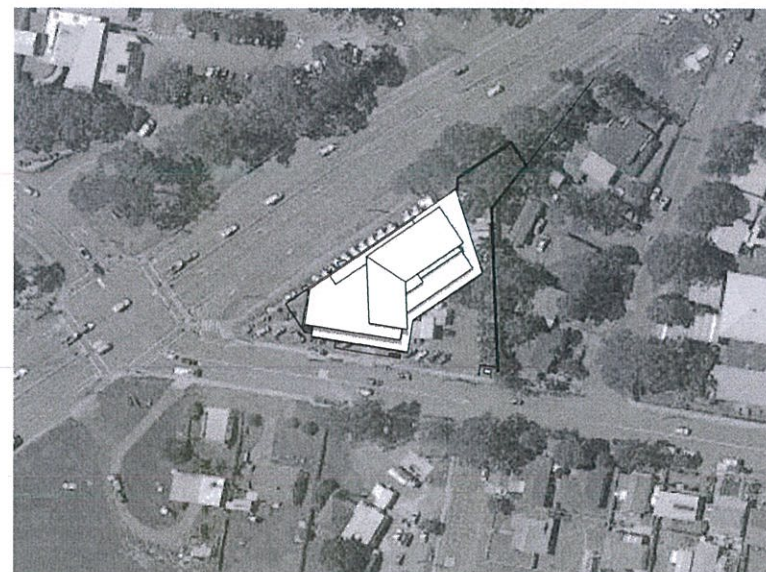
6. 20th March 3pm



7. 21st December 9am



8. 21st December 12pm



9. 21st December 3pm

USE FIGURED DIMENSIONS ONLY. DO NOT SCALE
ALL DIMENSIONS SHALL BE VERIFIED ON SITE AND
DISCREPANCIES IMMEDIATELY BROUGHT TO THE
ATTENTION OF THE PROJECT MANAGER
FOR RESOLUTION

"CLOUDS" & REVISIONS ARE INTENDED AS GUIDES
AND DO NOT NECESSARILY DESCRIBE THE FULL
EXTENT OF REVISIONS
ASCERTAIN FULL EXTENT BY COMPARISON WITH
PREVIOUS VERSION

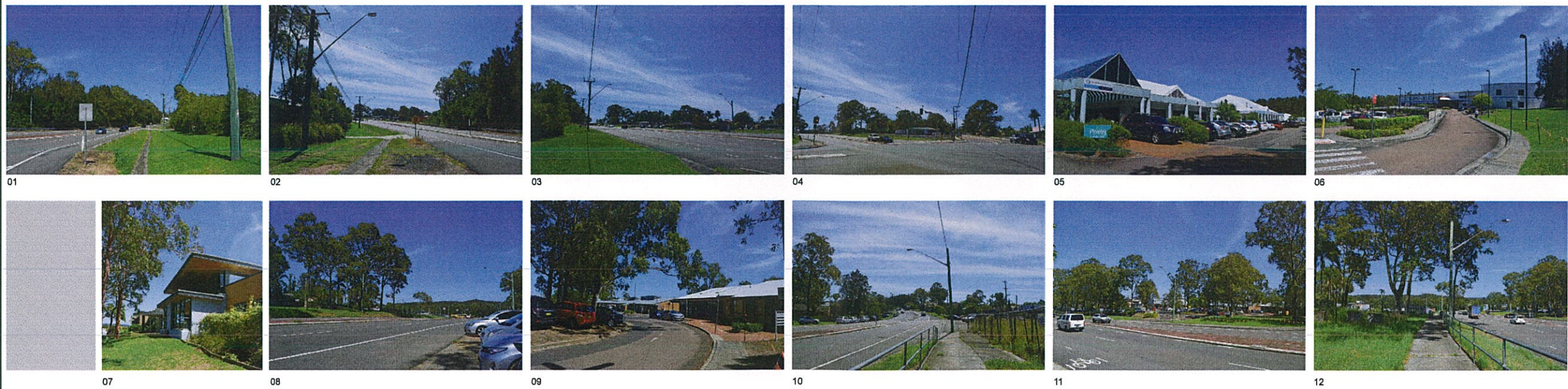
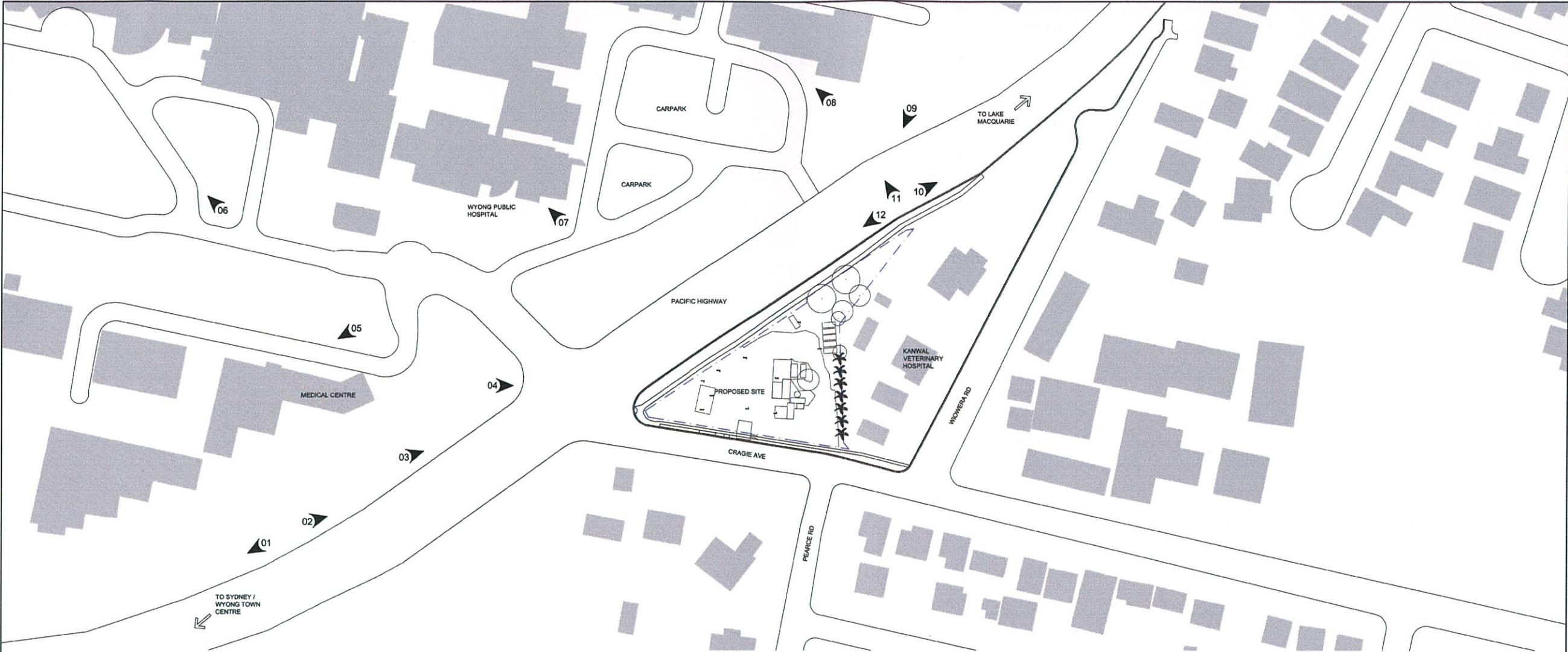
QA
CHECK

Subject	By	Date	Subject	By	Date	Subject	By	Date
RDS			STRUCT			PROJ. ARCH		
ARCH			SPEC. CONS					
AUT			SERV					

True North
PROJECT
NORTH

Drawn
ET
Checked
HMC
Date
15.03.17
Scale/s
N.T.S.
Drawing Title
Shadow Diagram

1	ISSUED FOR AU REVIEW	21.03.17	HMC
REV	REVISION DESCRIPTION	DATE	BY
Project TUGGERAH LAKES PRIVATE HOSPITAL			
Principal HEALTH CARE PTY LTD			
HPI HEALTH PROJECTS INTERNATIONAL Architects and Health Facility Planners 428 046 955-956 Suite 1, Ground Floor, 68 Alfred St Milsons Point, NSW 2061 Ph: (02) 9460 4199 Fax: (02) 9460 4299			
CAD File WHE-SD-1	Supp No WHE-SD-1	Issue 1	

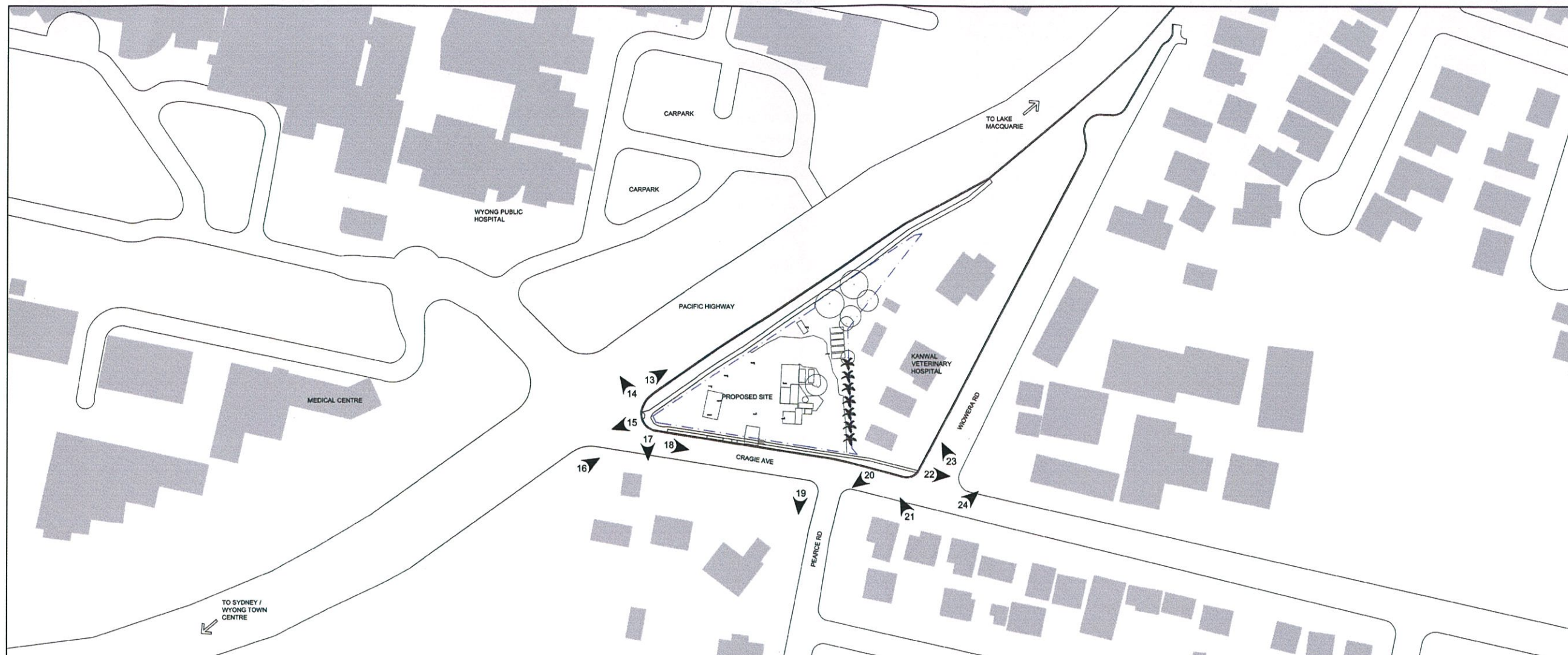


1	ISSUE FOR AU REVIEW	27.03.17	EH
REV	REVISION DESCRIPTION	DATE	BY
Project			
TUGGERAH LAKES PRIVATE HOSPITAL			
Principal			
HEALTH CARE PTY LTD			
HPI HEALTH PROJECTS INTERNATIONAL Architects and Health Facility Planners ACN 096 856 595 Suite 1, Ground Floor, 68 Alfred St, Milsons Point, NSW 2061 Ph: (02) 9460 4199 Fax: (02) 9460 4299			
CAD File	Dwg No.	Issue	
WHE-P-SITE	WHE-SV-1	1	

USE FIGURED DIMENSIONS ONLY. DO NOT SCALE.
ALL DIMENSIONS SHALL BE VERIFIED ON SITE AND
DISCREPANCIES IMMEDIATELY BROUGHT TO THE
ATTENTION OF THE PROJECT MANAGER
FOR RESOLUTION

"CLOUDS" & REVISIONS ARE INTENDED AS GUIDES
AND DO NOT NECESSARILY DESCRIBE THE FULL
EXTENT OF REVISIONS.
ASCERTAIN FULL EXTENT BY COMPARISON WITH
PREVIOUS VERSION.

QA CHECK			
Subject	By	Date	Subject
ROD			STRUCT
ARCH			SPEC. CONS
AUT			SERV
Subject	By	Date	Subject
PROJ. ARCH			
True North			
Drawn	Checked	Date	Scale/s
HMC	HMC	13.03.17	1:1000 in A1
Drawing Title			
SITE VIEWS 1			



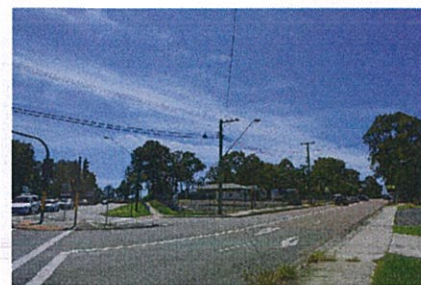
13



14



15



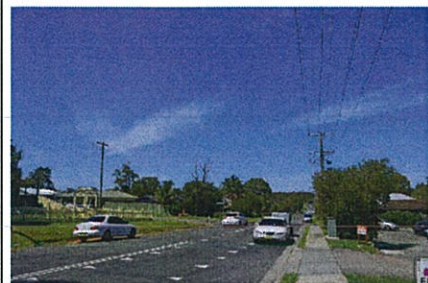
16



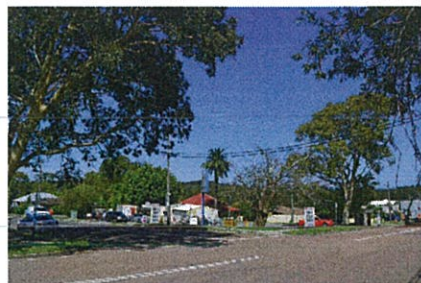
17



18



19



20



21



22



23



24

0 10 25 50 100

USE FIGURED DIMENSIONS ONLY. DO NOT SCALE. ALL DIMENSIONS SHALL BE VERIFIED ON SITE AND DISCREPANCIES IMMEDIATELY BROUGHT TO THE ATTENTION OF THE PROJECT MANAGER FOR RESOLUTION.

"CLOUDS" & REVISIONS ARE INTENDED AS GUIDES AND DO NOT NECESSARILY DESCRIBE THE FULL EXTENT OF REVISIONS. ASCERTAIN FULL EXTENT BY COMPARISON WITH PREVIOUS VERSION.

QA CHECK

Subject	By	Date	Subject	By	Date	Subject	By	Date
RDS			STRUCT			PROJ. ARCH		
ARCH			SPEC. CONS					
AUT			SERV					

True North
PROJECT NORTH

Drawn	Checked	Date	Scale/s
HMC	HMC	13.03.17	1:1000 in A1

Drawing Title
SITE VIEWS 2

1	ISSUE FOR AU REVIEW	27.03.17	EH
REV	REVISION DESCRIPTION	DATE	BY

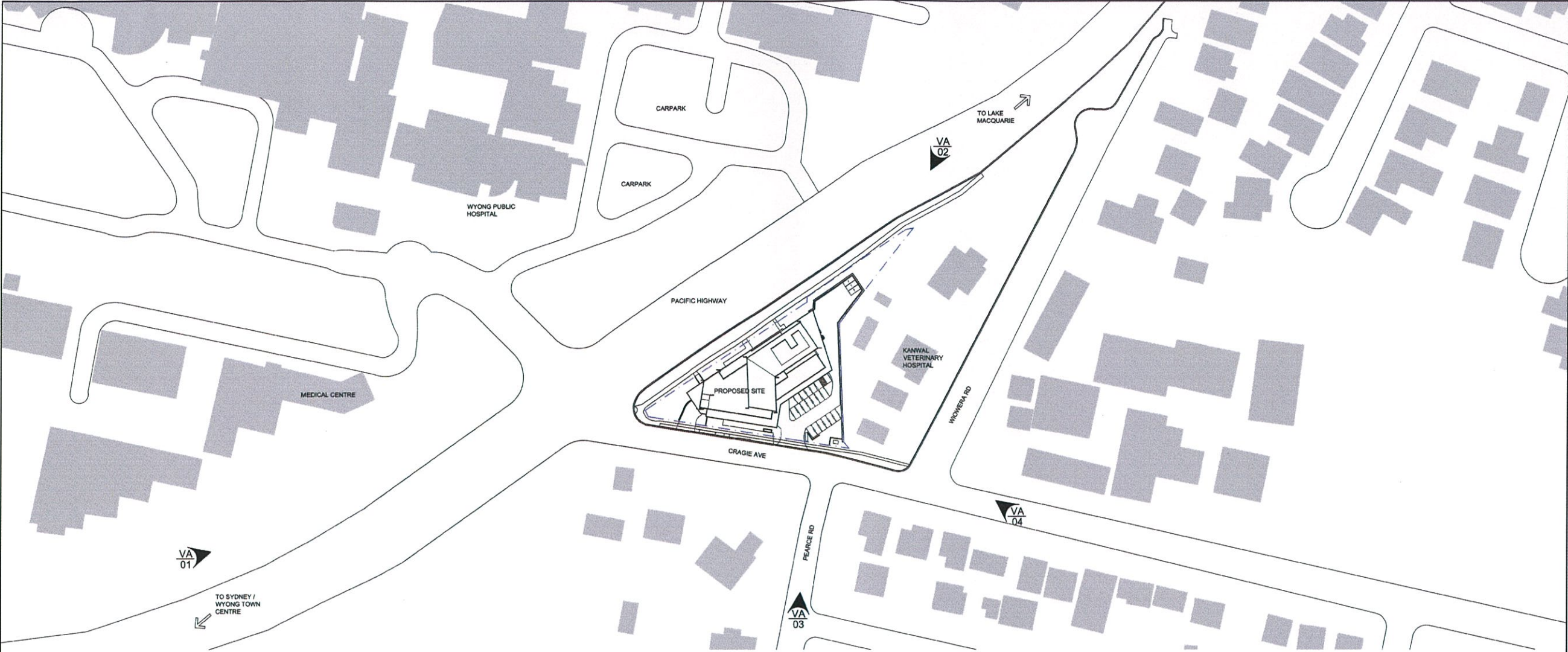
Project
TUGGERAH LAKES PRIVATE HOSPITAL

Principal
HEALTH CARE PTY LTD

HEALTH PROJECTS INTERNATIONAL
Architects and Health Facility Planners

ACN 056 856 505
Suite 1, Ground Floor, 68 Alfred St, Milsons Point, NSW 2061
Ph: (02) 9460 4199 Fax: (02) 9460 4299

CAD File WHE-P-SITE	Dwg.No. WHE-SV-2	Issue 1
------------------------	----------------------------	-------------------



EXISTING



PROPOSED



Montage 1

Montage 2

Montage 3

Montage 4

USE FIGURED DIMENSIONS ONLY. DO NOT SCALE. ALL DIMENSIONS SHALL BE VERIFIED ON SITE AND DISCREPANCIES IMMEDIATELY BROUGHT TO THE ATTENTION OF THE PROJECT MANAGER FOR RESOLUTION.		"CLOUDS" & REVISIONS ARE INTENDED AS GUIDES AND DO NOT NECESSARILY DESCRIBE THE FULL EXTENT OF REVISIONS. ASCERTAIN FULL EXTENT BY COMPARISON WITH PREVIOUS VERSION.		QA CHECK		Subject By Date RDS ARCH AUT		Subject By Date STRUCT SPEC. COM SERV		Subject By Date PROJ. ARCH		True North PROJECT NORTH		Drawn HMC		Checked HMC		Date 13.03.17		Scale/s 1:1000 In A1		Drawing Title VISUAL ANALYSIS		CAD File WHE-P-SITE		Dwg.No. WHE-VA-1		Issue 1	
---	--	--	--	----------	--	---------------------------------------	--	--	--	-------------------------------	--	-----------------------------	--	--------------	--	----------------	--	------------------	--	-------------------------	--	----------------------------------	--	------------------------	--	---------------------	--	------------	--

1	ISSUE FOR AU REVIEW	27.03.17	EN
REV	REVISION DESCRIPTION	DATE	BY
Project TUGGERAH LAKES PRIVATE HOSPITAL			
Principal HEALTH CARE PTY LTD			
HPI HEALTH PROJECTS INTERNATIONAL Architects and Health Facility Planners ACN 066 656 585 Suite 1, Ground Floor, 68 Alfred St, Murrumbidgee, NSW 2561 Ph: (02) 9460 4199 Fax: (02) 9460 4299			